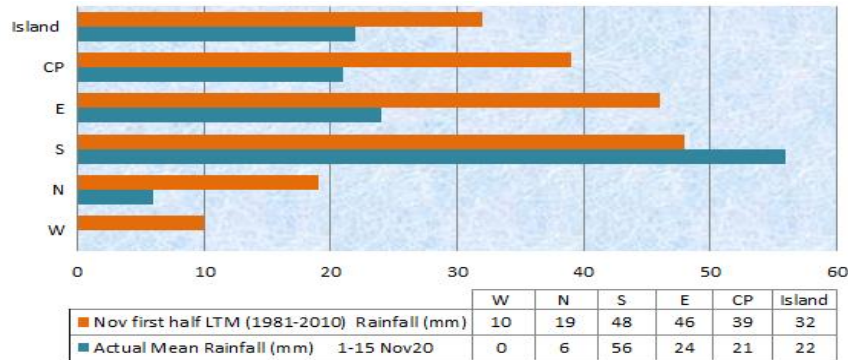


Mauritius Meteorological Services

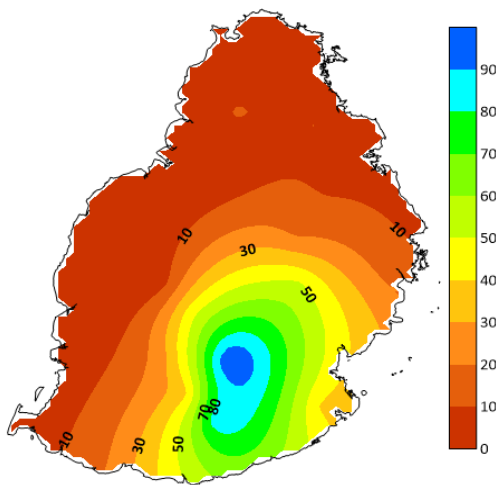
Mean Rainfall for 1-15 November 2020

Mauritius

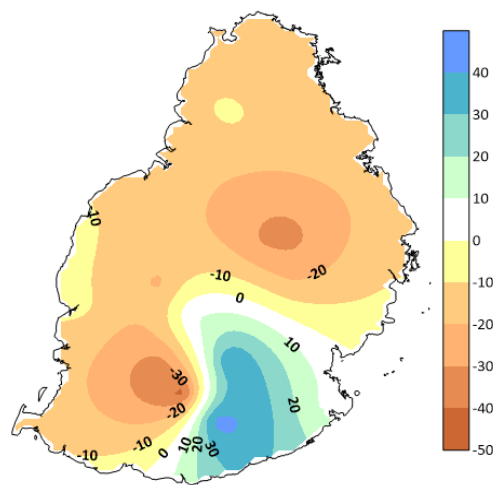
The first half of November 2020 had well below normal rainfall amounting to 22 mm, representing 69 % of the long term mean for this period. However, locally to the south slightly above normal rainfall was recorded with an excess rainfall of above 30mm in the regions of Britannia and Union Park. In some regions to the south, notably at Bois Cheri, rainfall was deficient by 40 mm.



Observed Rainfall (mm)



Rainfall Anomaly (mm)



Outer Islands

		Amount (mm)		
	Stations	Actual Rainfall	LTM Rainfall	% of LTM
Rodrigues	Pointe Canon	15	32	48
	Plaine Corail	4	30	14
	Citronelle	27	52	53
	Agalega	6	40	16
	St Brandon	105	14	749

Rodrigues and Agalega received well below normal rainfall for this first fortnight.

It was extremely wet at St. Brandon with over 700% of its normal rainfall for this period.

Ram Dhurmea

For Director

25 November 2020